

26th May 2023



A message from our Deputy Headteacher: Becky Hodt

Dear Parents and Carers,

What a fabulous week! The sun has been shining and we have enjoyed lots of exciting activities indoors and outdoors.

Our Year 2 pupils had a brilliant time on their trip to Warwick Castle. Thank you to all of the parents who volunteered to go on the trip and well done to the children who, as always, were exceptional representatives of the school.

Today we are saying goodbye to Mrs Davison, who is leaving us to take on the role of Assistant Headteacher at another school. We wish her all the best for the future and would like to thank her for all of her contributions to Manor Park. She will be missed!

We would like to remind parents that correct school uniform should be worn at all times. Own clothes should only be worn by children on agreed whole school or year group/class own clothes days. We have attached the uniform policy as a reminder if you are unsure of what your child should be wearing. Thank you for your co-operation with this.

As we head into the summer months, please make sure that your child has a water bottle and sun hat in school with them when the weather is hot. We would appreciate if you could apply any suncream required before school wherever possible.

A reminder that next week is half term so school will be closing today until Monday 5th June. We hope you all have a wonderful week; let's hope the sunshine continues!

Becky Hodt

Deputy Headteacher

Dates for your diary

Monday 29th May

Half Term

Thursday 8th June

Year R Vision Screening

Friday 16th June

Class 7 Assembly

Friday 16th June

Class 11 Assembly

Monday 19th June

EYFS Opening Evening

Friday 30th June

Class 3 Assembly

Friday 30th June

Class 18 Assembly

Friday 30th June

Summer Fayre

Wednesday 5th July

Year 4 Whitby Trip

Monday 10th July

Let's Investigate Day

Learning in Nursery

This week in Nursery, we have been spending lots of time outdoors in this beautiful weather. We used a dice and skittles to work on our Maths skills. We rolled the dice, looked at how many skittles we knocked down, and had a go at writing that number on a whiteboard!



Learning in Reception

This week in Reception we went on a minibeast hunt. We drew and labelled the minibeasts we found.



Learning in Year 1

This week Year 1 have continued to master sending and returning a ball in PE. We have some potential tennis stars at Manor Park!



Learning in Year 2

On Tuesday, Year 2 had a fantastic school trip to Warwick Castle. We went on a tour and used our prior knowledge to help us answer questions. We also had the chance to watch the mighty trebuchet launch a projectile! We had so much fun!



Learning in Year 3

This week in science, Year 3 investigated how fossils are made. We learnt about the process behind making fossils, what happened when a dinosaur died and how the fossils were formed.



Learning in Year 4

This week in Year 4, we used the 'Makey Makey' computing programme to design and use our own games controller using lead, foil and even bananas!

Learning in Year 5

Year 5 have studied the artist Brianna McCarthy, practised different art techniques and created their own mixed media collage heads. Fantastic individuality Year 5!



Learning in Year 6

Year 6 played team games in order to gather information and learn about what blood is made up of and its functions in the body.



Manor Park University

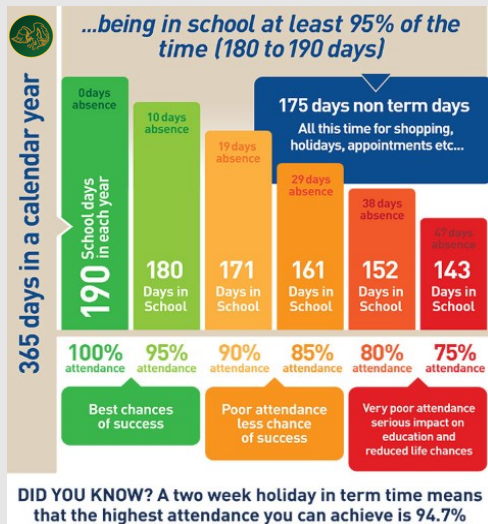
During Manor Park University the children in the 'Maths is Fun!' course have been learning how to play darts, dominos and card games.



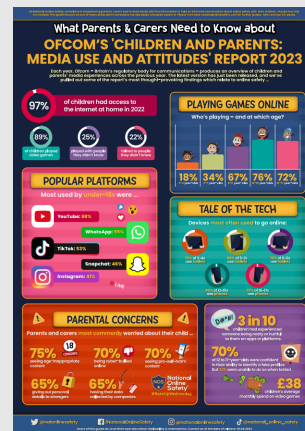
Attendance



Congratulations to **Class 15** who achieved **100%** attendance last week.



Online Safety



Click image to enlarge

Nursery Places

Nursery still have a few remaining places for September 2023. If you have a child aged 3 before 31st August 2023 they would be eligible for 3-year-old funding.

If you would like further information regarding nursery places, please contact Amelia on 024 76 501736. Alternatively please visit the school's website to fill out a nursery enquiry form. All enquiry forms will go to the nursery admissions team.