

2nd December 2022

Manor Park News



A message from our Headteacher: Jill O'Connor

Dear Parents and Carers,

We have had another very exciting week in school, with wonderful learning taking place and children enjoying a range of exciting, practical activities.

Thank you to parents for supporting our PTA Christmas bring and buy sale on Monday, through sending in donations and attending the sale to support PTA in their Christmas fundraising.

Next week Reception and Year 6 will be having height and weight checks on Monday. We are also holding a special lunch on this day, with our Junior Leadership Team, some staff and governors all attending, to give AIP our school caterers, their views on the school meals. We are totally committed to ensuring that our children have the best possible school meal and lunchtime experience. It was for this reason that we recently commissioned an external lunchtime audit. Following this audit we are making some changes to the way lunchtimes will operate commencing after the Christmas holiday.

These changes will involve us operating two sittings. Children who require an extended time to eat their meal will have the facility to do so, with no child being restricted on time to comfortably eat their meal. Children will be allocated to a table, which will be their table for the rest of this academic year. Each table will have a mix of children eating packed lunches and hot dinners. Children in all year groups will spend 25 minutes in the dining room and 30 minutes playing outdoors and participating in lunchtime clubs.

Staff have this week consulted with all children in their class, asking them to identify a friend(s) they would like to sit with, ensuring that there is a mix of school dinners and packed lunches on each table.

Some of the criteria for a Better Lunchtime Experience that we are following include:

- o Lunchtimes run in a timely manner, with classes allocated set times to begin and end lunch that complement the school day
- o Pupils consume their lunch in an allocated eating space with those consuming packed lunches from home and school meals sharing the same table
- o The dining space is organised with staggered sittings, avoiding lengthy queues and wait times
- o Cutlery and cups of water are put on tables with a salad cart including a wide range of salad and fruit, along with milk freely available, as part of

Dates for the term

Monday 5th December

National Child Measurement Programme Year R & Year 6

Monday 12th December

Class 3 Nativity

Tuesday 13th December

Class 4 Nativity

Wednesday 14th December

Class 5 Nativity

Thursday 15th December

Christmas Jumper Day & Lunch

Thursday 15th December

Nursery Nativities

Thursday 15th December

PTA Christmas Movie Night

Friday 16th December

Last day of Autumn term

Tuesday 3rd January

First day of Spring term

Tuesday 10th January

PTA Meeting 9.00am

A message from our Headteacher: Jill O'Connor

the school meal provided

o Pupils sit with friends and enjoy social interaction at their allocated tables

o Pupils wash their hands/use sanitiser before entering the dining space for their sitting, and hand sanitiser is available during lunchtime and when they exit the dining space

o The atmosphere is pleasant and pupils enjoy lunchtime with their peers in the dining space

o School meals are healthy, nutritious and in line with the school food plan/school food standards

o Packed lunches are mostly healthy and there are procedures in place to promote 'healthier packed lunches'

o The outdoor space is zoned for pupils to engage in a variety of activities which promotes physical activity

o The outdoors promotes development of social and leadership skills for pupils

o Zones offer pupils a variety of play areas with and without equipment and spaces for downtime

o A quiet zone is enforced for pupils who want a calmer lunchtime outdoors

o First aid is dealt with efficiently

o Pupils comment, mostly of enjoying lunchtimes

o Lunchtimes continue to provide an enjoyable experience for all pupils and staff

We will of course keep you updated on developments as we implement changes in the new year.

Thank you for your continued support. My best wishes to everyone.

Jill O'Connor Headteacher

S

Self-sufficient

O

Original

A

Attitude

R

Resilient



Manor Park
Primary School

Soar to Success—Self-Sufficient, Original, Attitude, Resilient

Learning in Nursery

This week in Nursery we have loved deepening our knowledge of kings, queens and everything medieval. We enjoyed going on a dragon hunt and we even learnt to do some medieval dancing that we will use when we have our medieval banquet party!



Learning in Reception

This week in Reception we have been working hard on our reading. We have been reading words and then matching them to the picture.



Learning in Year 1

This week Year 1 went to Quinton Pool to observe the different human and physical features we could see in our local environment. We drew maps of what we had seen when we returned to school.



Learning in Year 2

This week Year 2 having been learning about habitats, including micro habitats. We spent our afternoon in the forest school where we found plenty of mini beasts under logs and stones.



Learning in Year 3

This week Year 3 have finished their D&T project by completing their sashes by joining both ends together using a running stitch.



Learning in Year 4

Year 4 thoroughly enjoyed their DT day this week. They have learnt about preserving methods in Roman times and the current day including pickling, drying, salting and smoking. They made bread and prepared a fresh Roman inspired salad! They finished off the day with a Roman banquet and quiz.

Learning in Year 5

Year 5 have been working on their computing skills this week. They've used their Saqqara tomb newspaper report to inspire writing their own scripts and creating a news programme with the Greenscreen app. This included layering their video and inserting an image for their background.



Learning in Year 6

After learning about Anderson Shelters this term, Year 6 have been putting their D&T skills (measuring and marking, sawing and using the hot glue gun to bond wooden rods together) to use and have built scaled down versions of an Anderson Shelter. Next week, during Science, we will be using circuitry to add light to the structures.



Manor Park University

This week the children in the pottery course have been making their own unique creations.

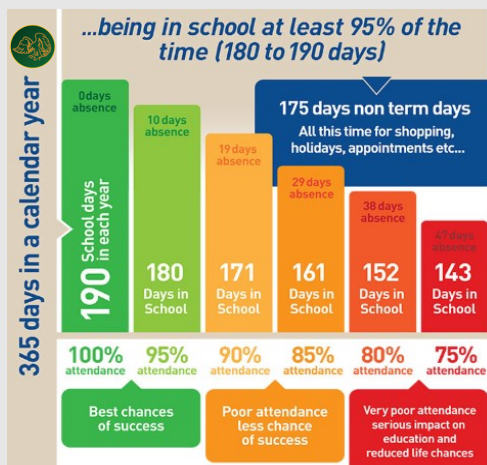


Attendance



Manor Park achieved **92.2%** attendance this week.

Congratulations to **Class 16** who achieved **98.4%** attendance this week.



DID YOU KNOW? A two week holiday in term time means that the highest attendance you can achieve is **94.7%**



THANK YOU

Manor Park Primary School

for raising a fantastic

£194.30

The money you have raised will be used to help change the lives of children and young people facing disadvantage in communities across the UK.

BBC
CHILDREN
IN NEED

BBC Children in Need has not verified the above fundraising. This is not a receipt.
© BBC 2007 Reg. charity England & Wales no. 802052 and Scotland no. SC039557.

A Message from Macmillan Cancer Support



Manor Park, you've just done something wonderful! Thank you so much for your donation of **£318.25**.

Every penny raised will help Macmillan do whatever it takes for people living with cancer, as we continue to offer physical, financial and emotional support to those who need us.

Thank you once again. Your support means so much.

The Coffee Morning Team

sdh ACADEMY
CHRISTMAS CAMPS
19th-23rd December 2022

ST. JOHN'S
CV5 9HZ 8AM - 5PM

BRIDGETOWN
CV37 7JP 8AM - 5PM

MANOR PARK
CV3 5EZ 8AM - 5PM

CHARTER
CV4 8DW 9AM - 4PM

WOLVEY
LE10 3LA 9AM - 4PM

WE HAVE 4 HAF VENUES THIS CHRISTMAS:
MANOR WOLVEY CHARTER BRIDGETOWN
ALL HAF PLACES INCLUDE A 9AM-4PM BOOKING WITH LUNCH, DRINKS, AND SNACKS ON THE DAY!

WWW.SDH-ACADEMY.CO.UK

Benefits AND Energy
Advice and Information
FREE Session for Parents and Carers

We will be joined by representatives from...
Coventry Independent Advice Service & National Energy Action (NEA)

Come join us, if you would like to...

- know more about benefits for a child or young person with disabilities
- have an overview of Child DLA, PIP from age 16, and becoming an Appointee
- know about the rules for Universal Credit and studying
- know where to get more advice
- get advice on energy, water usage, bills, debt and grants available
- know more about 'cost of living' information

Wednesday 7th December 2022
10am - 12pm

Venue: Committee Room 3, Council House, Earl Street, Coventry, CV1 5RR

To book a place or for further information contact **SENDIASS**
Tel: 024 7669 4307 or email: iass@coventry.gov.uk

S **O** **A** **R**
Self-sufficient *Original* *Attitude* *Resilient*