

Welcome to Early Years



Manor Park Primary School
Soar To Success

Welcome



A warm welcome to all our new children and their families starting school is an extremely exciting time for children, parents and teachers. All of the staff at Manor Park Primary School are here to support our new families in every stage of their child's learning journey. The school is fully prepared with outstanding provision, welcoming and engaging learning environments. We are looking forward to welcoming all our families back in September. Later on in the year, we are planning to have lots of stay and play opportunities where parents will be welcome to come into school to meet their child's class teacher, visit their classroom and to take part in some exciting activities.

Early Years Foundation Stage Staff

Class 3



**Miss Valiadis
Reception Teacher**



**Miss Hurst
Reception LSA**

Class 4



**Mrs Fyfe
Reception Teacher**

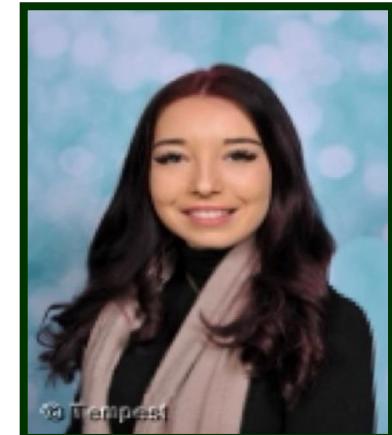


**Miss Stubbs
Reception HLTA**

Class 5



**Miss Healy
Reception Teacher**



**Miss Allen
Reception LSA**



**Mrs Bygrave
Early Years Leader**



Nursery Staff



Miss Bourke
Nursery Teacher



Mrs Lakin
Nursery Nurse



Miss Cunningham
Nursery Nurse



Early Years Extended Provision Staff



Mrs Butlin
Extended Provision
Manager



Miss Scott
Nursery Nurse



Mrs Chahal
Nursery Nurse



Miss Tremain
EYEP LSA



Mrs Jackson
EYEP LSA



Mrs Stirling
EYEP Playworker



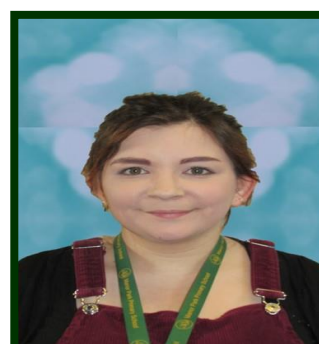
Miss Cleverley
EYEP Support Staff



Mrs Khalid
EYEP Support Staff



Miss Requena
EYEP Support Staff



Mrs Crosby
EYEP Support Staff



Mrs Black
EYEP Support Staff



Mrs Sayed
EYEP Support Staff

Four Themes of The Early Years Foundation Stage

A Unique Child

- Child's interests and personal experiences are valued
- Individualised learning is celebrated
- Learning Journals and Home School Learning Journals are part of daily practice

Enabling Environments

- Warm, friendly welcoming environment
- Extending learning and development
 - Stimulating, fun experiences
 - Promoting independence

Positive Relationships.

- Working together in partnership with parents is promoted through:
- Stay and Play sessions and enrichment opportunities
 - Regular newsletters
 - Seesaw learning platform
 - Friends
- Sharing news, experiences, stories, rhymes

Four Themes of The Early Years Foundation Stage

Stage

7 Areas of Learning and Development

Communication and Language

good talking, listening, playing with sounds, vocabulary, questions, instructions...

Mathematics

number rhymes and songs, counting, sorting, shapes, number ditties...

Literacy

songs, rhymes, stories, mark making, writing...

Physical Development

fine and gross motor skills - cutting, sticking, threading, mark making, writing, health and self care, independence, putting on coats, using toilet, washing hands...

Personal, Social and Emotional Development

sharing, taking turns, being a good friend, confidence...

Expressive Arts and Design

Being artistic and imaginative painting, mixing colours, collage, music, dance, role play...

Understanding the World

Families, friends, festivals, investigating...

Our Rich and Engaging Early Years Environment

- Large, well resourced indoor classrooms
- Exciting outdoor learning environments
 - Forest School
- Extensive school grounds
- Two large halls for PE lessons and assemblies
- Our very own London library bus
 - An Early Years caravan



Starting Reception

- Supportive and experienced staff
- Learning new routines
- Fun and exciting activities
- Making new friends

- Meet & Greet Self Register and Settling In Activities (Gates Open 8.35am/Free Flow Entry Between 8.45/8.55am)
 - Phonics 9.00-9.20am (Wake and Shake/5 minutes)
- Carpet Session - Literacy/Numeracy and Other Areas of Learning - Children's Next Steps (Classroom Based)
 - Adult-Supported Activities/Independent Learning/Outside Provision
- Carpet Session - Review/Reflect/Mental Maths
 - Lunch 12.00noon-1.00pm
- Carpet Session - Topic/Modelling Skills for Child Initiated Learning
- Continuous Provision Across Reception (Inside and Outside)
- Carpet Session (story/singing) & Prep for Home (Gates Open 3.25pm/School Finishes 3.30pm)



Starting Nursery



- Motivate - child's interests and personal experiences
- Individualised learning - fun, playful, challenging
- Warm, friendly, welcoming environment



- Family/Key Worker Groups sharing news, experiences, stories, rhymes
- Learning Journals and Home School Learning Journals
 - Newsletters

Starting time:

Morning session - 8.45am

Afternoon session - 12.40pm

- Registration and Key Worker/Carpet Session
- Child Initiated Time - choosing games/activities/inside and outside
- Key Worker/Adult Supported Activities
 - Snack - milk and fruit
 - More activity time
 - Singing and Story Time

Home time:

Morning session - 11.45am

Afternoon session - 3.40pm

Please be on time.

Reception School Dinners and Snacks

All children in Reception, Year 1 and Year 2 are entitled to a free school meal each day. Our catering company, AIP provide a wide range of delicious, fresh food that is prepared daily for our children to enjoy. There is always a vegetarian option, fresh salads, fruits and desserts for the children to choose from.

You will find more information including daily menus with meal choices, information about individual dietary requirements and lunchtime provision by clicking on the following link:

<http://www.manorpark.coventry.sch.uk/Lunchtime>

In addition, children in Nursery and Reception will also receive a piece of fruit, a carton of milk and access to water each day.

School Uniform

Our uniform consists of:

- Grey or black trousers/shorts/skirt/pinafore dress
- Plain white long or short sleeved shirt
- Green and gold striped tie
- Green school V neck sweatshirt/jumper or cardigan - purchased or knitted
- Green/white gingham "summer" dress
- Sensible black school shoes or black school boots (no fashion boots, pumps, trainers or high heels). Other style boots may be worn to and from school but children will need to change into shoes or pumps at school
- Dark green fleece (optional)
- Green, white, grey and black socks or tights
- Wellington boots are also necessary so that children can access all the outdoor areas.

Embroidered items with our school logo are available from our

uniform supplier - Andy Blair Sports and School Wear

88-90 Barker's Butts Lane, Coventry, CV6 1DY

024 7659 8080 andyblairsports@yahoo.co.uk

There is also information on our website about uniform:

<http://www.manorpark.coventry.sch.uk/Uniform-Information>



Click here for a video message from Andy Blair!



Nursery Uniform

Children who attend one of our nurseries and are of nursery age, in Kingfishers, Sparrows, Owls, Woodpeckers, Nightingales, Swallows and Robins key worker groups, are required to wear a white polo shirt and a green school V neck sweatshirt /jumper or cardigan, purchased or knitted. Green/white gingham 'summer' dresses can also be worn. Jogging bottoms are comfortable and practical for the children to wear in addition to their school tops.

Children who are in Caterpillars or Butterflies key worker groups do not have to wear a school uniform and casual, easy to manage clothing suitable to the environment is best.

We would be grateful if you could provide a complete change of clothes for your child in a named drawstring bag to hang on their peg. If we need to change your child could you please return their spare clothing to their pump bag the following day.

Working in the outdoor classroom is an integral part of the nursery session at all times of the year. Please make sure that your child has a pair of named wellington boots on their peg and is suitably dressed. They will also need a coat with them to ensure that this can take place. You will also need to supply a sun hat for your child to wear during the summer months.

Please make sure that all clothing that is worn in school is clearly marked with your child's name!

Early Years Extended Provision



Flexible extended day provision combining a free funded nursery session.

- **Morning EYEP Session 8.45am-11.45am**
- Full Day Provision is available with or without 30 hour funding - Please speak to Mrs Butlin with regards to needs and requirements as we do offer flexible and bespoke options.
- **EYEP Lunchtime Sessions** - Morning Nursery children 11.30am - 1.15pm
Afternoon Nursery Children 11.15am - 12.40pm

(Charge per session - £5.00 parents to provide packed lunch/£7.10 with school dinner.

Afternoon EYEP Session - 1.00pm-4.00pm

All extended sessions include snacks and meals. All pre-booked sessions must be paid for. No refunds will be given for sessions missed due to illness or holidays.

Please contact the school office or Nursery Manager to check the availability of education and provision places to meet your specific needs.



Champs After School Provision



Mrs Buckley
After School
Extended Provision
Manager

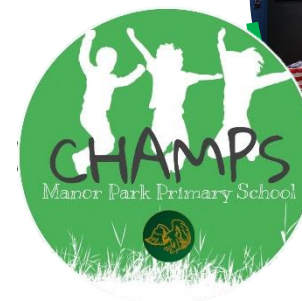
Breakfast - 7.45am-9am £4.50
per session

3.30pm-4.30pm £4.50

3.30pm-5.30pm £8.50

3.30pm - 6.00pm £10.50

(ALL PRICES ARE SUBJECT TO
CHANGE IN JANUARY 2021)



Encouraging Independence



Supporting your child at home:

Encourage your child to be self sufficient.

Dress and undress him/herself.

Look after personal belongings.

Independence when eating and going to the toilet.

Sharing, respect for others and taking turns.

Know their name and age.

Good manners.



Medical Details

Please keep us informed about any on-going medical conditions or allergies...

