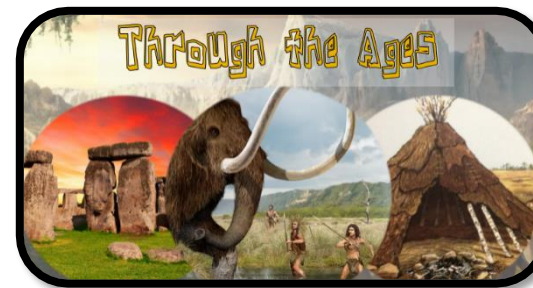




Year 3 Summer Term



Please select at least 4 homework tasks to complete over the term. Your work will be presented in your creative curriculum books - house points will be given for effort and originality.



History

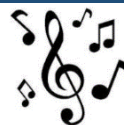
Carry out some research on prehistoric sites or settlements in the UK. What can we learn about prehistoric times from the evidence which is left?

Prehistoric sites you could visit in the West Midlands:

- Castle Old Fort - a small Iron Age hill fort in Stonnall, Walsall
- Wychbury Ring - an Iron Age hill fort on Wychbury Hill in Stourbridge

Music

Use the link to learn a rap all about the Stone Age:



<https://www.youtube.com/watch?v=mrk21LdFuxw>

Can you create a rap about the Bronze Age or Iron Age? You could use something from around the house as a drum and tap out a beat.

D&T

- Use recycled resources or lego to build a pre-historic settlement thinking carefully about the features (during the Stone Age, Bronze Age or Iron Age). You could design your own pre-historic landmark and have a go at building it!
- Design a prehistoric menu thinking carefully about the ingredients that people would have been able to hunt or forage at that time. Have a go at making a pre-historic dish for your family.

Art

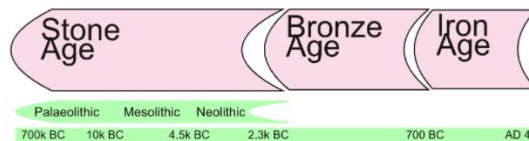


Create your own cave art. Make 'prehistoric paper' using tea bags or coffee and rip the edges. Let it dry and then paint on prehistoric designs. Think carefully about what to paint/draw in a prehistoric style. You might want to include some hand prints!



Computing

Use an app of your choice to showcase your learning from the topic. You could focus on one of the ages (Stone, Bronze or Iron) or all of them.



Geography

Research prehistoric landmarks in the UK and choose three of them.

<https://www.english-heritage.org.uk/learn/histories/prehistoric-monuments/>

Use Google Earth to find each of them.

- Where are they located in the UK?
- How long would it take for you to get there?
- What can we learn from these landmarks?

PSHE

Learn how to tie your shoe laces if you don't already know how to.



In PSHE, we have been learning about being responsible. What sorts of things should we be responsible for? How can we ensure that we are as responsible as possible in readiness for Year 4? Create a poster to display your ideas.

Science

On a sunny weekend, carry out your own shadow investigation in your garden using an object and either some chalk to draw the outline of the shadow or an ipad to take photos from the same spot throughout the day. What happens to the shadow?



If you have other ideas of projects you would like to complete at home (which are linked to the topic), you can do these too. Remember, this work will be stuck into your creative curriculum book so make it as creative and engaging as you can!