



Year 6 Spring Term



Please select at least 4 homework tasks to complete over the spring term. Your work will be presented in your creative curriculum books - prizes and house points will be given for effort and originality.



History

Research the indigenous people (Inuits) of the Arctic. How have their lives changed

over time? How has tourism impacted on their lives? Present your findings for your creative curriculum book.

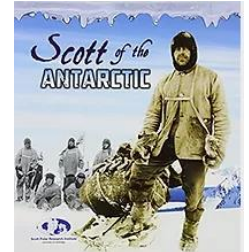


Geography

Watch the video below which compares the geography of the Arctic and Antarctic. When finished, complete the quiz and upload your score to Seesaw.

<https://classroom.thenational.academy/lessons/what-is-the-geography-of-the-arctic-and-antarctic-69qk4d>

Recommended reads for this topic:



Art

Use a range of snowy images to create a polar collage. Remember to use lots of

interesting textures, shapes, colours and patterns. Search Google for some examples (polar collages).



Computing

On powerpoint or google slides, produce a presentation on any country located within the Arctic Circle. What interesting facts can you find out? Upload this work to Seesaw.

Links of interest to support your learning:

Watch the fascinating Frozen Planet series to learn more about the polar regions.

<https://www.bbc.co.uk/iplayer/episode/b00zj1q5/frozen-planet-1-to-the-ends-of-the-earth>

Find out about climate change on the following website.

This will help with your PSHE homework.

<https://climatekids.nasa.gov/climate-change-meaning/>



PSHE

What is Climate Change and how is it affecting the polar regions. Design a poster to share your

understanding of this very important topic.



Music

What can you find out about the musician Terje Isungset? What does he make his instruments out of? Listen to the following

<https://www.youtube.com/watch?v=dONSkfbxnao> and write down/draw how it makes you feel.

Learn all about Robert Falcon Scott on the following short video link

<https://www.youtube.com/watch?v=HosGqMXSeWk>

